

Research Paper

Draft genome sequences of three filamentous cyanobacteria isolated from brackish habitats

Joanne Sarah Boden¹✉, Michele Grego², Henk Bolhuis², Patricia Sánchez-Baracaldo¹✉

1. School of Geographical Sciences, Faculty of Science, University of Bristol, Bristol, BS8 1SS, United Kingdom.
2. Department of Marine Microbiology and Biogeochemistry, Royal Netherlands Institute for Sea Research, and Utrecht University, Den Hoorn, the Netherlands.

✉ Corresponding authors: Joanne Sarah Boden and Patricia Sánchez-Baracaldo. E-mail(s): j.boden@bristol.ac.uk; p.sanchez-baracaldo@bristol.ac.uk.

© The author(s). This is an open access article distributed under the terms of the Creative Commons Attribution License (<https://creativecommons.org/licenses/by/4.0/>). See <http://ivyspring.com/terms> for full terms and conditions.

Received: 2020.09.24; Accepted: 2021.01.27; Published: 2021.02.17

Abstract

Brackish cyanobacterial genome sequences are relatively rare. Here, we report the 5.5 Mbp, 5.8 Mbp and 6.1 Mbp draft genomes of *Spirulina* sp. CCY15215, *Leptolyngbya* sp. CCY15150 and *Halomicronema* sp. CCY15110 isolated from coastal microbial mats on the North Sea beach of the island of Schiermonnikoog in the Netherlands. Large scale phylogenomic analyses reveal that *Spirulina* sp. CCY15215 is a large cell diameter cyanobacterium, whereas *Leptolyngbya* sp. CCY15150 and *Halomicronema* sp. CCY15110 are the first reported brackish genomes belonging to the LPP clade consisting primarily of *Leptolyngbya*, *Plectonema* and *Phormidium* spp. Further genome mining divulges that all new draft genomes contain, *ggpS* and *ggpP*, the genes responsible for synthesising glucosylglycerol (GG), a compatible solute found in moderately salt-tolerant cyanobacteria.

Key words: *Spirulina* sp. CCY15215, *Halomicronema* sp. CCY15110, *Leptolyngbya* sp. CCY15150, cyanobacteria, genome, brackish

Introduction

Cyanobacteria (commonly known as 'blue-green algae') are oxygenic photoautotrophs which evolved in the Archaeon (4 to ~2.5 billion years ago) [1, 2] and have since diversified into a wide range of habitats, including lakes, oceans, soil, rocks, geothermal springs and glaciers [3]. Brackish species have been found living in estuarine environments [4, 5], but few genomes of brackish species have been sequenced [6]. Some of these include *Nodularia spumigena* CCY9414 and *Aphanizomenon flos-aquae* from the Baltic Sea [7, 8] and four strains of *Microcystis aeruginosa* from Japan and the Netherlands [9-11].

Phylogenetic and trait evolution studies suggest there have been several transitions between saltwater and freshwater environments during the evolution of cyanobacteria [12]. Intermediate stages of such transitions could have lived in brackish environments before acquiring the genetic mechanisms (e.g. synthesis of compatible solutes [13]) necessary to tolerate higher salinity of the ocean or lower salinity of freshwater lakes and rivers inland. To understand these stages in more detail, we sequenced draft

genomes of three new brackish and filamentous strains isolated from sediments on the island of Schiermonnikoog in The Netherlands: *Spirulina* sp. CCY15215, *Halomicronema* sp. CCY15110 and *Leptolyngbya* sp. CCY15150.

Materials and Methods

Three strains of cyanobacteria were isolated from a microbial mat on the island of Schiermonnikoog in The Netherlands [14]. Monophototrophic cultures were isolated by plating and grown in BA+ medium (https://www.ccy.nioz.nl/cyanobacteria_media) at 20°C under a 16 h: 8 h light:dark cycle with 10-20 $\mu\text{mol m}^{-2} \text{s}^{-1}$ of white light.

Genomic DNA was extracted from 1.8 ml of each microbial culture using DNeasy ultraclean microbial kits (Qiagen, Germany) according to the manufacturer's instructions. Purified genomic DNA was stored in 10 mM Tris buffer at pH 8 and -80°C until further use.

Genomic DNA libraries for each strain were prepared using the TruSeq Nano LT kit (Illumina, Inc,

Cambridge, UK). Whole genome sequencing was performed by the University of Bristol Genomics Facility, UK. Paired-end reads of 2x150 bps were obtained using a NextSeq® 500/550 (Illumina, San Diego, CA) with 300 cycles of the Mid Output Kit v2. Raw reads were quality trimmed using Trimmomatic v0.39 [15] and de novo assembly performed with SPAdes v3.14.0 [16]. Short contigs containing less than 200 nucleotides were removed from the resulting assemblies. Cyanobacterial contigs were separated from other contigs using BLAST analysis and a de Bruijn graph visualisation approach that has previously been used to assemble draft genomes of *Phormidesmis priestleyi* BC1401 [17] and *Leptolyngbya* sp. BC1307 [18]; see Supplementary Information Figures S1-S3. Genome completeness was measured based on comparisons with single-copy orthologs from cyanobacteria using BUSCO v3.0.2 [19]. All draft genomes were submitted to JGI IMG/ER [20] for annotation (GOLD Analysis Project IDs: Ga0438272, Ga0438271 and Ga0437567). Draft genome sequences have been deposited in DDBJ/ENA/Genbank repositories under accession numbers JACSWA000000000 for *Spirulina* sp. CCY15215, JACSWB000000000 for *Leptolyngbya* sp. CCY15150 and JACSWC000000000 for *Halomicronema* sp. CCY15110. These are stored within BioProject PRJNA658956 with BioSample accessions from SAMN15893520 to SAMN15893522.

The evolutionary relationships of our brackish strains with other cyanobacteria were estimated by performing maximum likelihood phylogenetic analysis of 139 orthologous proteins, SSU rRNA and LSU rRNA from 168 strains representing the entire diversity of the Phylum, Cyanobacteria. Similar methods have been implemented previously (see these studies for a more detailed description [6, 12, 21]). Briefly, genomes were obtained from the NCBI RefSeq database (<https://www.ncbi.nlm.nih.gov/refseq/>). Protein and rRNA sequences were identified using the basic local alignment search tool (BLAST)

for proteins or nucleotides respectively with an e value cut off $<1 \times 10^{-25}$ to remove anomalous hits. Each protein and rRNA were aligned using MAFFT v7.427 [22] and gaps removed if present in 85% or more sequences. The phylogeny itself was constructed in IQ-TREE v1.6.7 [23] using partitioned analyses which account for heterotachy and allow each protein and rRNA to evolve under a substitution model appropriate to that unique protein or RNA. Each of the substitution models were selected using Bayesian Information Criterion scores predicted by ModelFinder [24]. Support for branching relationships were measured by calculating ultrafast bootstrap approximations with 1000 replicates [25]. The resulting phylogeny was rooted with four representative strains of Vampiromicrobia, the sister phylum of Cyanobacteria [26].

Results and Discussion

Each draft genome is composed from between 304 and 621 contigs with genome sizes ranging from 5.5 to 6.1 Mbps. Overall genome completeness is estimated at between 97.1 to 98.0% with N50 values in the range of 31,079 to 116,290 and GC content from 42.6 to 54.6% (Table 1). To find out how these strains are related to other cyanobacteria, phylogenomic analyses were conducted using 139 orthologous cyanobacterial proteins as well as SSU and LSU rRNA. They reveal that 2 of the 3 filamentous brackish strains are nested within the LPP clade previously defined by Sánchez-Baracaldo [6] (Figure 1, Supplementary Information Figure S4). The other, named *Spirulina* sp. CCY15215 is in a distant phylogenetic position within the Macrocyano bacterial clade defined by Sánchez-Baracaldo [12] (Figure 1). Macrocyano bacteria are ecologically diverse, but generally have large cells, ranging from 3 to 50 μm in diameter. Members of the clade vary from Nostocales to *Microcystis* spp. and *Oscillatoria* spp.

In particular, *Spirulina* sp. CCY15215 shares a recent common ancestor with two other *Spirulina* spp. that have slightly smaller genome sizes of 5.05 and 5.32 Mbp [27] compared to 5.5 Mbp for *Spirulina* sp. CCY15215. The closest relative, *Spirulina major* PCC6313 was also isolated from brackish waters [27]. It was found in California, North America [27], more than 8000 km away from the Netherlands where *Spirulina* sp. CCY15215 was collected from. Their outgroup, *Spirulina subsalsa* PCC9445, has previously been

Table 1. Genome Features

	<i>Spirulina</i> sp. CCY15215	<i>Leptolyngbya</i> sp. CCY15150	<i>Halomicronema</i> sp. CCY15110
Genome length (bp)	5,514,817	5,756,177	6,149,393
Genome coverage	213x	260x	228x
N50	31,079	116,291	38,914
Number of contigs	621	304	443
GC content	42.58%	53.40%	54.62%
Completeness*	97.1%	98.0%	98.0%
Protein-coding genes	5447	5173	5760
Number of rRNAs	11	3	3
Number of tRNAs	48	45	51

*Completeness was estimated using BUSCO v3.0.2 with lineage data from cyanobacteria [19].

cultured in artificial seawater [28]. Since these close relatives of *Spirulina* sp. CCY15215 also grow in brackish and saltwater habitats, the most recent common ancestor of *Spirulina* spp. may also have been salt-tolerant.

Unlike *Spirulina* sp. CCY15215 which shares a common ancestor with brackish cyanobacteria, *Halomiconema* sp. CCY15110 is sister to a marine strain, named *Aphanocapsa montana* BDHKU 210001 (Figure 1). Phylogenetic analyses conducted using 16S SSU rRNA show that *Halomiconema* sp. CCY15110 is also closely-related to *Halomiconema excentricum* str. *Lakshadweep*, isolated from a marine habitat in India (Supplementary Information, Figure S5). The genus name 'Halomiconema' was therefore assigned to reflect this relationship.

To further investigate the mechanisms responsible for salt tolerance, protein BlastP searches were conducted for enzymes involved in the production of compatible solutes. Compatible solutes are molecules which aid osmoregulation in salty water [29]. Their production is catalysed by a series of

genome-encoded enzymes, including phosphatases (eg. GgpP, GppP, Spp), synthases (eg. GpgS, GgpS, TreY, Sps), hydrolases (eg. TreZ) and methyltransferases (eg. GSMT and DMT). In order to make any single compatible solute, multiple enzymes are required. For example, an appropriate synthase and phosphatase must be present to combine the glucose group of one molecule with the carbohydrate group of another and then remove a phosphate ion to synthesise sucrose, glucosylglycerol (GG) or glucosylglycerate (GGA). Whereas, to synthesise trehalose and glycine betaine (GB), either a synthase and hydrolase or two different methyltransferases must be encoded respectively in the genome [29]. To ensure we correctly identified the presence or absence of genes encoding these enzymes in each new genome, BlastP were conducted with query sequences from well-characterised cyanobacteria, including *Synechocystis* sp. PCC 6803, *Nostoc* sp. PCC 7120 and *Synechococcus* sp. PCC 7002 amongst others (Supplementary Information, Table S1).

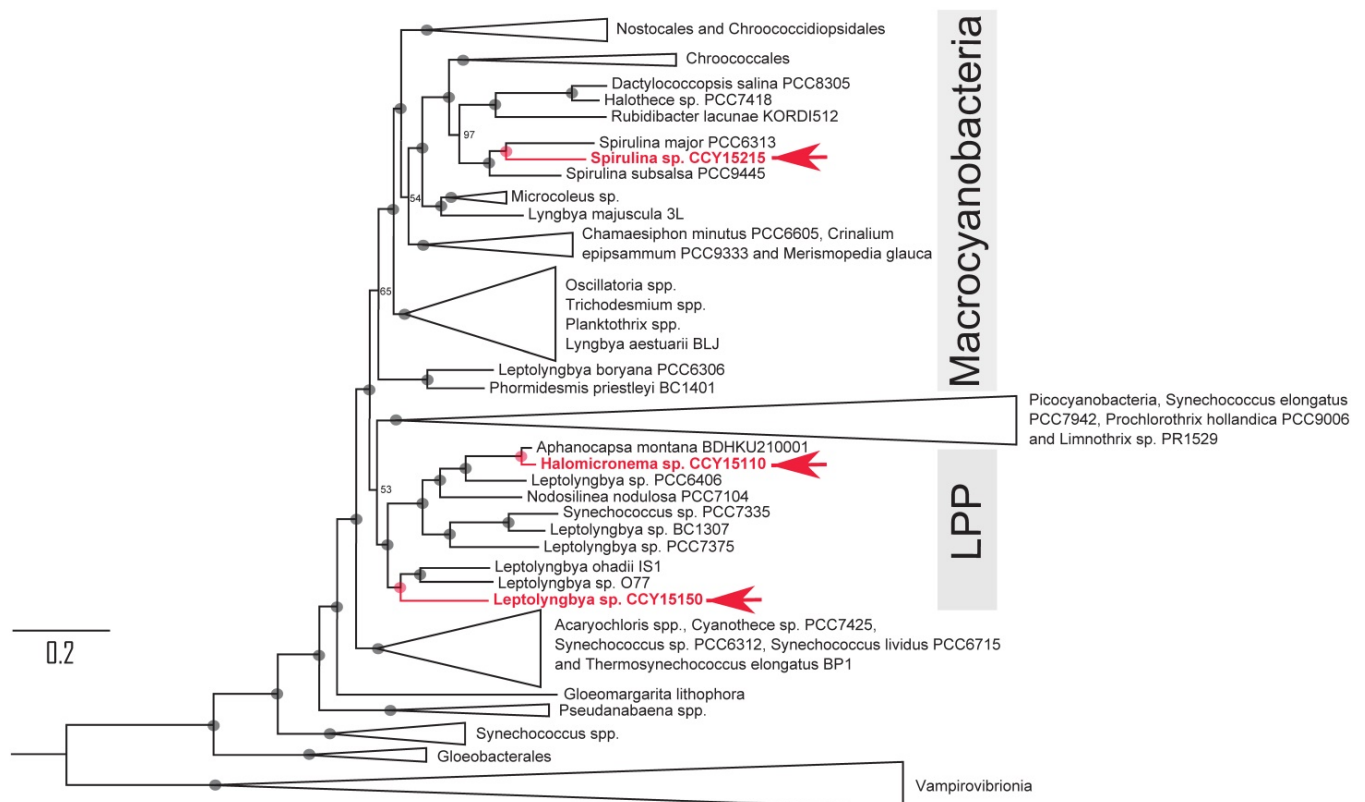


Figure 1. Phylogenetic tree showing the relationships of *Spirulina* sp. CCY15215, *Halomiconema* sp. CCY15110 and *Leptolyngbya* sp. CCY15150 (red) within the Phylum, Cyanobacteria. The tree was constructed from alignments of 139 orthologous proteins, SSU rRNA and LSU rRNA using Maximum Likelihood methodology implemented in IQ-TREE v1.6.7 [23]. It was rooted using four strains of Vampirovibrionia as the outgroup. Node labels represent ultrafast bootstrap approximations with circles representing values of 100. The scale bar represents an average of 0.2 substitutions per site. For a complete tree detailing all taxa that were included, see Supplementary Information Figure S4.

Table 2. Results of BLASTP for genes encoding compatible solutes in three new draft genomes of cyanobacteria isolated from an overall brackish habitat

		<i>Spirulina sp.</i> CCY15215	<i>Leptolyngbya sp.</i> CCY15150	<i>Halomicronema sp.</i> CCY15110	
Sucrose	SpsA (SI10045)	# Hits	0	3	1
		% Iden.	n/a	29.4	40.7
		E value	n/a	2.24E-48	3.94E-11
	SpsA (AIr3370)	# Hits	18	14	8
		% Iden.	26.8	66.7	26
		E value	7.03E-24	0	1.29E-22
	SpsA (AI14376)	# Hits	18	12	12
		% Iden.	25.6	66.7	26.4
		E value	2.00E-26	0	2.90E-24
	Spp	# Hits	0	1	0
		% Iden.	n/a	41.6	n/a
		E value	n/a	3.83E-60	n/a
Trehalose	TreY	# Hits	0	0	0
		% Iden.	n/a	n/a	n/a
		E value	n/a	n/a	n/a
	TreZ	# Hits	2	3	4
		% Iden.	25.2	29.7	23.9
		E value	5.64E-27	8.65E-47	1.32E-32
Glucosylglycerol	GgpS	# Hits	1	1	1
		% Iden.	64.5	74.9	65.7
		E value	0	0	0
	GgpP	# Hits	1	1	1
		% Iden.	56.3	58.3	59.9
		E value	9.06E-170	1.64E-170	7.80E-177
Glucosylglycerate	GpgS	# Hits	0	1	1
		% Iden.	n/a	57.6	57.7
		E value	n/a	2.88E-172	4.95E-172
	GpgP	# Hits	0	1	1
		% Iden.	n/a	34.6	38.9
		E value	n/a	4.71E-39	3.25E-52
Glycine betaine	GSMT	# Hits	0	1	0
		% Iden.	n/a	29.5	n/a
		E value	n/a	4.47E-12	n/a
	DMT	# Hits	1	2	2
		% Iden.	28.8	34.4	33.1
		E value	5.42E-17	6.29E-21	2.93E-19

Homologs of genes required for the biosynthesis of sucrose (SpsA and Spp), trehalose (TreY and TreZ), glucosylglycerol (GgpS and GgpP), glucosylglycerate (GpgS and GpgP) and glycine betaine (GSMT and DMT) were found via BLASTP for genes identified by [29]. All results have e values lower than 1×10^{-10} . If multiple hits were found, statistics are reported for the hit with the smallest e value. % Iden. refers to percent identity.

Our genome mining reveals that all three brackish strains are genetically capable of making GG (Table 2). It has previously been hypothesised that GG-production is a characteristic of moderately halotolerant marine cyanobacteria [29]. In addition to GG, *Leptolyngbya sp.* CCY15150 and *Halomicronema sp.* CCY15110 can make GGA (Table 2). Experimental studies measuring the accumulation of compatible solutes in cyanobacteria exposed to changing

environmental conditions, suggest that GGA production increases in response to nitrogen limitation as well as increasing salinity [30], so its presence in *Leptolyngbya sp.* CCY15150 and *Halomicronema sp.* CCY15110 may help them to grow in lower nitrogen concentrations.

In addition to GG and GGA, *Leptolyngbya sp.* CCY15150 is genetically capable of making two further compatible solutes which may help it tolerate

more saline conditions on the coastline. These are GB and sucrose (Table 2). Similarly large ranges of compatible solutes can be found in hypersaline strains [13], which is unusual given that *Leptolyngbya* sp. CCY15150 was isolated from a fresher, brackish environment [14]. One explanation may lie in the changeability of intertidal habitats. Coastal microbial mats are subjected to alternate ebbs and flows of the tide and changing weather patterns (e.g. precipitation, humidity and temperature) which have the effect of changing salinity. For example, on hot days, after the tide recedes, water evaporates from the microbial mat, leaving the surrounding environment to become more and more saline until the next rainfall or influx of the tide. Metagenomic analyses show that during Summer, the hottest season of the year in Schiermonnikoog, *Leptolyngbya* spp. in general are more abundant than *Halomicronema* spp. [14]. The presence of additional compatible solutes in *Leptolyngbya* sp. CCY15150 may go some way towards explaining this. Conversely, as draft genomes of *Halomicronema* sp. CCY15110 and *Spirulina* sp. CCY15215 both contain homologs of genes encoding one of two enzymes required for sucrose biosynthesis (SpsA but not Spp) and one of two enzymes required for GB biosynthesis (DMT but not GSMT, Table 2), there remains a small possibility that their complete genomes are sufficient to make additional compatible solutes.

Overall, draft genomes of three filamentous cyanobacteria expand the genomic representation of brackish strains in the tree of life and reveal that strains isolated from the same intertidal environment employ different strategies to acclimate to and tolerate variable salinities in a changing environment.

Abbreviations

BLAST: basic local alignment search tool; GG: glucosylglycerol; GGA: glucosylglycerate; GB: glycine betaine; SSU: small sub-unit; rRNA: ribosomal ribonucleic acid; LSU: large sub-unit; RNA: ribonucleic acid.

Supplementary Material

Supplementary figures and tables.

<http://www.jgenomics.com/v09p0020s1.pdf>

Acknowledgements

We thank Giorgio Bianchini for providing scripts to gather phylogenetic data sets, and Dan Macrae for assistance with DNA extraction and culture maintenance of *Spirulina* sp. CCY15215. Funding support for this work came from a Royal Society Research Fellows Enhancement Award

(RGF\EA\180219) and a Royal Society University Research Fellowship to P.S-B.

Competing Interests

The authors have declared that no competing interest exists.

References

- Schirrmeister BE, Gugger M, Donoghue PCJ. Cyanobacteria and the Great Oxidation Event: Evidence from genes and fossils. *Palaeontology*. 2015; 58: 769-85.
- Schirrmeister BE, Sánchez-Baracaldo P, Wacey D. Cyanobacterial evolution during the Precambrian. *Int. J. Astrobiology*. 2016; 15: 187-204.
- Mishra AK, Tiwari DN, Rai AN. Cyanobacteria: From basic science to applications. 1st ed. London, United Kingdom: Academic Press. 2018.
- Cepleli N, Sundh J, Ekman M, Dupont CL, Yooshep S, Bergman B, et al. Meta-omic analyses of Baltic Sea cyanobacteria: Diversity, community structure and salt acclimation. *Environ. Microbiol.* 2017; 19: 673-86.
- Lopes VR, Vasconcelos VM. Planktonic and benthic cyanobacteria of European brackish waters: A perspective on estuaries and brackish seas. *Eur. J. Phycol.* 2011; 46: 292-304.
- Blank CE, Sánchez-Baracaldo P. Timing of morphological and ecological innovations in the cyanobacteria - a key to understanding the rise in atmospheric oxygen. *Geobiology*. 2010; 8: 1-23.
- Bolhuis H, Cretoiu MS, Stal LJ. Molecular ecology of microbial mats. *FEMS Microbiol. Ecol.* 2014; 90: 335-50.
- Sulcius S, Alzbutas G, Kvederaviciute K, Koreiviene J, Zakrys L, Lubys A, et al. Draft genome sequence of the cyanobacterium *Aphanizomenon flos-aquae* strain 2012/KM1/D3, isolated from the Curonian Lagoon (Baltic Sea). *Genome Announc.* 2015; 3.
- Tanabe Y, Yamaguchi H. Draft genome sequence of *Microcystis aeruginosa* NIES-4285, isolated from brackish water (Lake Abashiri, Japan). *Microbiol. Resour. Announc.* 2019; 8.
- Sandrini G, Huisman J, Matthijs HC. Potassium sensitivity differs among strains of the harmful cyanobacterium *Microcystis* and correlates with the presence of salt tolerance genes. *FEMS Microbiol. Lett.* 2015; 362.
- Tanabe Y, Hodoki Y, Sano T, Tada K, Watanabe MM. Adaptation of the freshwater bloom-forming cyanobacterium *Microcystis aeruginosa* to brackish water is driven by recent horizontal transfer of sucrose genes. *Front. Microbiol.* 2018; 9: 1150.
- Sánchez-Baracaldo P. Origin of marine planktonic cyanobacteria. *Sci. Rep.* 2015; 5: 17418
- Hagemann M. Molecular biology of cyanobacterial salt acclimation. *FEMS Microbiol. Rev.* 2011; 35: 87-123.
- Cardoso DC, Cretoiu MS, Stal LJ, Bolhuis H. Seasonal development of a coastal microbial mat. *Sci. Rep.* 2019; 9: 9035.
- Bolger AM, Lohse M, Usadel B. Trimmomatic: A flexible trimmer for Illumina sequence data. *Bioinformatics*. 2014; 30: 2114-20.
- Bankevich A, Nurk S, Antipov D, Gurevich AA, Dvorkin M, Kulikov AS, et al. SPAdes: A new genome assembly algorithm and its applications to single-cell sequencing. *J. Comput. Biol.* 2012; 19: 455-77.
- Christmas NAM, Barker G, Anesio AM, Sánchez-Baracaldo P. Genomic mechanisms for cold tolerance and production of exopolysaccharides in the Arctic cyanobacterium *Phormidismis priestleyi* BC1401. *BMC Genomics*. 2016; 17: 533.
- Christmas NAM, Williamson CJ, Yallop ML, Anesio AM, Sánchez-Baracaldo P. Photoecology of the Antarctic cyanobacterium *Leptolyngbya* sp. BC1307 brought to light through community analysis, comparative genomics and *in vitro* photophysiology. *Mol. Ecol.* 2018; 27: 5279-93.
- Simao FA, Waterhouse RM, Ioannidis P, Kriventseva EV, Zdobnov EM. BUSCO: Assessing genome assembly and annotation completeness with single-copy orthologs. *Bioinformatics*. 2015; 31: 3210-2.
- Markowitz VM, Chen IM, Palaniappan K, Chu K, Szeto E, Grechkin Y, et al. IMG: The integrated microbial genomes database and comparative analysis system. *Nucleic Acids Res.* 2012; 40: D115-22.
- Sánchez-Baracaldo P, Bianchini G, Di Cesare A, Callieri C, Christmas NAM. Insights into the evolution of Pico-cyanobacteria and phycoerythrin genes (mpeBA and cpeBA). *Front. Microbiol.* 2019; 10:45.
- Katoh K, Standley DM. MAFFT multiple sequence alignment software version 7: Improvements in performance and usability. *Mol. Biol. Evol.* 2013; 30: 772-80.
- Trifinopoulos J, Nguyen LT, von Haeseler A, Minh BQ. W-IQ-TREE: A fast online phylogenetic tool for maximum likelihood analysis. *Nucleic Acids Res.* 2016; 44: W232-5.

24. Kalyaanamoorthy S, Minh BQ, Wong TKF, von Haeseler A, Jermiin LS. ModelFinder: Fast model selection for accurate phylogenetic estimates. *Nat. Methods*. 2017; 14: 587-589.
25. Hoang DTC O, Haeseler, A.V. Minh, B.Q. Vinh, L.S. UFBoot2: Improving the ultrafast bootstrap approximation. *Mol. Biol. Evol.* 2017; 35: 518-22.
26. Soo RM, Skennerton CT, Sekiguchi Y, Imelfort M, Paech SJ, Dennis PG, et al. An expanded genomic representation of the Phylum Cyanobacteria. *Genome Biol. Evol.* 2014; 6: 1031-45.
27. Shih PM, Wu DY, Latifi A, Axen SD, Fewer DP, Talla E, et al. Improving the coverage of the Cyanobacterial phylum using diversity-driven genome sequencing. *Proc. Natl. Acad. Sci. USA*. 2013; 110: 1053-8.
28. Cohen Z, Vonshak A. Fatty acid composition of *Spirulina* and *Spirulina*-like cyanobacteria in relation to their chemotaxonomy. *Phytochemistry*. 1991; 30: 205-6.
29. Hagemann M. Genomics of salt acclimation: Synthesis of compatible solutes among cyanobacteria. *Adv. Bot. Res.* 2013; 65: 27-55.
30. Klahn S, Steglich C, Hess WR, Hagemann M. Glucosylglycerate: A secondary compatible solute common to marine cyanobacteria from nitrogen-poor environments. *Environ. Microbiol.* 2010; 12: 83-94.